

SHOFAR

MAY - JUNE 2014 | IYAR - SIVAN 5774 5774

LIFE'S JOURNEY

Rabbi Carolyn Braun



On each holiday, I receive an inspirational message from CLAL, the National Jewish Center for Learning and Leadership. This Pesach they sent a message that for some reason deeply resonated with me. Connecting the symbol of matzah with journey, they asked, “What journey are you on right now?”

Our Biblical forbearers physically journeyed from Egypt to Israel; they journeyed from building pyramids to building their own holy space, and from constant physical labor to relatively constant walking.

Spiritually and emotionally they journeyed from bondage to freedom, from Egyptian practices to Jewish practices, from many Gods to One God. The Haggadah asks us to imagine ourselves as our forbearers: as slaves and then as a people redeemed. For me, it is an interesting and meaningful exercise, but thankfully somewhat distant from my life. My ‘enslavements’ are different, and while I have a sense of what ‘redemption’ means, it is more theoretical than actual. And so CLAL’s question hit home. What journey am I on right now?

I think that my present journey is related to ageing, but it also has something to do with experience and (I hope) the wisdom that follows. As Phil Levinsky would say, “I’ve never been this old before.” I feel as though I am able to see a bigger picture and I am happier with smaller victories. While I am not able to clearly describe my journey, I can feel it more clearly. I am also enjoying the ride! I think my journey is being spurred on by the amazing younger folks who have joined our TBE community. They are filled with the energy (when they are not exhausted by their children) and ideas; they are eager to participate – to cook, to urge us to do *Tikkun Olam*, and to educate our children.

Our Kadima Beth El Director Mel Weiss taught me something wonderful the other day. In describing the rest of our 7th grade curriculum, she talked about how we would do an “outro.” Raising my eyes in wonder (wondering if one of us was going mad or if I had just missed another 21st century phenomenon) I asked what she was talking about. ‘It’s the opposite of an intro,’ she explained. ‘Just as an intro is a transition into something, an outro is a transition to the next step. It is not ‘graduation,’ or ‘closure,’ or an ending, but rather, a transition. We don’t want our kids to think that the learning ends at the end of a class or grade, it merely fades into the next level, the next intro.’ I think she’s identified my journey: I’m in a transitional period. I feel like I have so much more to learn and experience, and it is the younger people who are leading me. I’m enjoying this part of the trip!

Those of our forbearers who felt that they had completed their journey when they got out of Egypt or when they entered Israel, missed a great opportunity to deepen their experience – and probably slowed down the creative process.

For 49 days beginning with the second night of Passover, our Tradition takes us on a spiritual journey that will lead us to Mount Sinai and the giving of the Torah. Interesting, receiving the Torah is not the end of the journey, but the beginning. Each year, Shavuot serves as our ‘outro’ as we ‘intro’ into the next chapter of our lives. For those who think that they finished their Jewish journey at the age of 13 or 17 with Bar/t Mitzvah or confirmation, there is a wonderful world of thought out there for you anytime you are ready. For those who are still on your journey - *kol hakavod*, roughly translated – well done!

One of my favorite poems reads, “But life is a journey, A sacred pilgrimage”. What journey are you on? ■



IN THIS ISSUE:

- 1 **Life's Journey**
Rabbi Carolyn Braun
- 3 **President's Message**
Irwin Gratz
- 3 **Bat Mitzvah Emily Freedman**
- 4 **Bar Mitzvah Jonathan Maidman**
- 4 **Me'Aviv Ad Kaitz**
(From Spring to Summer with KBE)
Melanie Weiss, KBE Director
- 5 **A Space for Learning & Socializing**
Jodi Veysey, Director
- 5 **Bar Mitzvah Sam Nemeroff**
- 6 **May - June Anniversaries**
- 6 **Committee News Updates**
- 7 **Condolences, Todah Rabah & Mazel Tov**
- 8 **Donations & Tributes**
- 10 **MAY - JUNE Calendar**
- 11 **Membership Business Directory**
- 12 **The Tzofim - Israeli Scouts, Live in Concert!**
Weds. May 28

TEMPLE BETH EL'S MISSION

Our vision is to be an embracing, supportive and vibrant community which observes Judaism in the Conservative tradition and which is devoted to the perpetuation of Jewish values and culture. Temple Beth El honors the diversity of its members and is committed to their spiritual growth.



TEMPLE BETH EL

SCHEDULE OF SERVICES

All are welcome.

Monday through Friday	6:50 am
Friday evening Kabbalat Shabbat service	5:30 pm
Saturday (Shabbat) and Jewish holidays	9:30 am
Sunday	9:00 am
Secular holidays	8:30 am

EXECUTIVE COMMITTEE 2013-2014

President - Irwin Gratz

Leadership Team:

July-Sept. 2013 - Adam Arens

Oct.-Dec. 2013 - Jon Brier & Judy Gatchell

Jan.-March 2014 - Irwin Gratz & David Brenerman

April-June 2014 - Joan Levy

Vice Presidents - Adam Arens, Jon Brier & Joan Levy

Treasurer - Jon Brier

Karen Lerman

At Large: Barbara Dichter

Ex officio:

Rabbi Carolyn Braun

Jodi Veysey

TEMPLE BETH EL 2013-2014 BOARD OF DIRECTORS

Robert Aranson

Adam Arens

Dauna Binder

Jon Brier

Barbara Dichter

Becky DeLois

David Brenerman

Kate Foye

Jodi Freedman

Irwin Gratz

Judy Gatchell

Karen Lerman

Joan Levy

Fae Silverman

Katie Small

Rabbi Carolyn Braun

Jodi Veysey, *Director*

Melanie Weiss, *Kadima Beth El Director*

Sherri Quint, *Bookkeeper & TBE Memorial Park Administrator*

Kelsie Camire & David Jacobs, *Administrative Assistants*

Deena Schoenfeld, *Communications Director & Special Events*

Bob Bradbury, *Custodian*

Rabbi Emeritus - Harry Z. Sky, D.D.

Cantor Emeritus - Kurt Messerschmidt

Shofar Design & Production - Deena Schoenfeld



THE RABBINICAL ASSEMBLY

PRESIDENT'S MESSAGE

Irwin Gratz



The departure of Dov Goldberg last spring created two vacancies in our Temple's professional staff. One was the position of Education Director, which has been filled this year by Melanie Weiss. She has continued our Kadima Beth El initiatives in education and will be back with us again for the next school year.

But Dov also served as our Hazzan (cantor), a second religious professional. He not only chanted beautifully during our services, but was also able to assist Rabbi Braun at times when other religious duties piled up. To date, we have not filled that position. But we must. Our congregation is comprised of well over 700 individuals and that means, in addition to religious services, we have many life-cycle events that lead to special services and other pastoral needs. And, since we can't always schedule these, sometimes Rabbi Braun can literally have to be in two places at once.

Hiring a full-time cantor is, for now, beyond our reach, financially. So, Rabbi Braun, and the temple's leadership, have been discussing alternatives to meet these needs. What we've decided to do is try and recruit a fifth year rabbinic or cantorial student for what would be, essentially, a paid, part-time, one year internship. This individual would join us on two long weekends each month.

Rabbi Braun has crafted a proposal that would have this individual lead some Shabbat services and assist in other life-cycle events. But we envision something a bit more. Since the individual who is likely to accept this appointment will be young, we want her or him to craft ways our Temple can reach out to people from the ages of about 20 to 35, people who might become members, or younger couples with children who might be our future Kadima Beth El Religious School students.

We think this will prove an attractive offer to prospective interns. They will gain valuable experience serving a congregation of considerable size. We hope to benefit from this person's energy and perhaps gain some new insights. If this experiment works out well, we could well repeat the offer on an annual basis. And, it's always possible that, in this process, we will find someone we may decide to hire for the long term, assuming that is financially feasible.

As we do this, your input will be invaluable. Please don't hesitate to be in touch with the Temple board or its leadership to let us know if this new arrangement helps us meet your needs.

Finally, I want to say I hope I will see many of you at our "Night of Jewish Baseball" gala on Sunday, June 8th. It has been very exciting hearing about the plans for it as they develop. It should be a fun evening and will help to fund our efforts here at Beth El.

Also, the Temple's annual meeting will be Friday evening, May 30th. Our constitution requires that our new board members be voted into office by congregants in attendance at the meeting. I promise we will keep any speeches real short and then we'll all be able to welcome in Shabbat with our usual service. ■

BAT MITZVAH Emily Freedman



Emily will be celebrating her Bat Mitzvah on May 17th, 2014.

Emily is in 7th grade at King Middle School. She enjoys Spanish and English class and has been participating in a writing club before school. Emily is an avid dance and theatre participant. She performed in the Wizard of Oz at KMS this year, and will once again be participating in Broadway Bound this summer. Emily also enjoys sports, including soccer and softball. She plays on both teams for King and also enjoys tennis camp in the summer.

When Emily is not in school or camp, chances are you will find her at the mall with her friends. We are pretty sure that she is supporting the economy! She also enjoys spending time with her friends whenever she can.

Emily has done several Mitzvah projects. She has been donating a portion of her allowance to Jewish Family Services. She also participated in last year's Dempsey Challenge with Melissa's Cancer Crushing Posse and plans to walk on the same team again this year. Lastly, she plans to volunteer at the Cedars.

We want to thank Rabbi Braun and Mel Weiss for helping Emily prepare for her Bat Mitzvah. We invite the community to join us as we celebrate Emily becoming a Bat Mitzvah.

BAR MITZVAH Jonathan Maidman



Please join Jackie and Patrick Maidman in worship and celebration when their son Jonathan is called to the Torah as a Bar Mitzvah on Saturday, May 24, 2014.

Jonathan is a seventh grader at North Yarmouth Academy. He enjoys playing the guitar and especially playing in the middle school blue grass band. His true passion is for skiing. Jonathan is a competitive freestyle skier and travels throughout New England to competitions.

For his mitzvah project, Jonathan has chosen to join the Boston Marathon Jimmy Fund Walk which supports Dana Farber Cancer Institute. He plans to walk a half marathon to raise money for cancer research. Jonathan's personal web page can be found at www.jimmyfundwalk.org/2014/skiingkid. There is no minimum donation and any contribution is greatly appreciated.

Me'Aviv Ad Kaitz (from spring to summer) at KBE!

Melanie Weiss

Director, Kadima Beth El Religious School Program

What a lovely spring we've had together at Kadima Beth El! Our school threw a wonderful **Purim shpiel** (play), which not only helped us – and the grown-ups! – learn a lot about brave Queen Esther, wise Mordechai, and evil Haman (boo!)... it was also lots of fun!

We had a great time preparing for **Passover**, too, by learning the four questions and the ten plagues, and the story of the Israelites' exodus from Egypt. Even our pre-KBE friends got in on the act, with our very first **Kol Yeladim** (early childhood programming) event of the year. Kids ages 0-4 years got to meet our brand new Kol Yeladim coordinator, Deena Schoenfeld, and do Pesach crafts, songs, and games with her! We're so excited for many more Kol Yeladim events in the coming school year!

Plus, the holiday fun is far from over! At the time of this writing, we're gearing up for a celebration of **Yom Ha'Atzmaut** – Israeli Independence Day – by throwing a *shuk* (a traditional Middle Eastern market) on May 4th. Kadima Beth El students, with the help of parents, teachers and volunteers, will be giving virtual tours of Israel, running market stands with the Hebrew vocabulary they've been working on, selling delicious Israeli treats, and presenting cool trivia all about Israel. We hope to see our whole community there – this *shuk* is open to everyone! And we're doubly excited that just a few weeks later, we get to spend an evening with the **Tzofim**, the incredible Israeli Scouts who will be performing a musical concert at TBE on May 28th. You are not going to want to miss it!

Of course, it's not just holiday fun and games – KBE students have been working hard on their learning, too! Our **Chaverim** friends in Pre-K and Kindergarten know their blessings and how to welcome in Shabbat, while our **Bereishit** students in first and second grade have made huge progress in their Hebrew reading. (Plus they are champions of morning *tfilah*!) Our **3rd through 6th graders** have been solving ethical quandaries and writing advice in their "Dear Abby" projects, and gave an amazing tour of the synagogue showing off everything they'd learned about it. Plus, on Sundays, these students are discussing the weekly Torah portion, learning the Hebrew roots of liturgical keywords, and kicking butt at Shimon Omer (Simon Says... in Hebrew!) Our **7th graders** have been mapping the intricate web of relationships inside a synagogue to best understand how to become strong leaders, including an evening when they "speed-interviewed" a whole crew of TBE staff and lay leadership. It was awesome! And our teens, in addition to their hard work in the classroom, have had a chance to enjoy the gorgeous new **Youth Lounge and Library**. We are very grateful for the generous funding from the Samuel L. Cohen Foundation and to our TBE staff and volunteers who made this wonderful space happen!

The fun and learning hasn't stopped this season at all, and it doesn't stop this summer, when we'll have more Shabbat HaLaila events, Hebrew tutoring for anyone interested (just ask), special teen training and more! Whatever the season, we can't wait to see you soon! *Lehitra'ot!* ■

A SPACE FOR LEARNING AND SOCIALIZING

A Message from TBE Director Jodi Veysey

Thanks to a generous grant from the Samuel L. Cohen Foundation and the financial support of Ernie & Toby Wallach, a beautiful, functional newly renovated Youth Lounge and TBE Library has come to fruition.

Walk through the door at the far right corner of the Social Hall and you are greeted by a freshly painted, clean and bright entryway that is soon to be decorated and painted by Kadima Beth El students. Newly treaded steps then lead you to the entry door of the renovated Youth Lounge and Library. As soon as you open the door, the transformation from a dingy, dark, unusable storage area to a bright, warm, welcoming multi-purpose room comes to light. What was once an area of three separate rooms, varying floor heights, peeling paint and an open ductwork ceiling, now houses one large room with a wide expanse of grey flecked epoxy flooring, walls of white, peacock blue, tangerine and even chalkboard black, drop ceilings, recessed and hanging lights, a fully renovated bathroom, built in bookcases, a computer study area, modular conference tables and so much more. One large wall of the Library space lent itself to become the canvas of Jean Aranson, whose mural entitled "Connected Through the Archways of Time" is a colorful and moving work of art for all to enjoy. We wish to thank Jean for her generous donation of talent and time to create this meaningful mural that will be appreciated for generations to come.

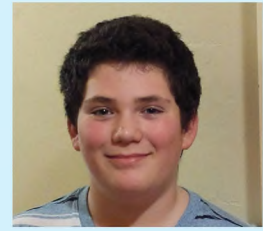
Our youth now have a special room where they can hold classes and enjoy social time, learn and congregate. Our members now have a larger and more usable library where they can check out a book, sit at a table and read, or enjoy a class, program, or meeting.

Some final touches are still in the works and the old Library bookcases and books are being moved into the new Library. Even during transition, this newly renovated area has already seen use for several classes and meetings.

Wendy and Larry Kane recently made a donation toward the purchase of a comfortable modern chair for the Youth Lounge in honor of their granddaughter Sarah's Bat Mitzvah. We are still in need of a new café study table and chair set, as well as a comfortable couch, both of which have been selected by a few of the teens and parents. Monetary donations are being accepted to make this possible and the teens are working on a fund raiser to help with the purchase of their selections. Please contact the Temple office to make a donation towards these items.

Whether you are here for services, Kadima Beth El, a meeting or just stopping by, please feel free to wander back to our Youth Lounge and TBE Library. We know that you will be amazed by the transformation! ■

BAR MITZVAH Sam Nemeroff



Sam will be celebrating his Bar Mitzvah on Saturday, June 14th 2014, Parshat Sh'lach Lecha.

Sam attended the Levey Day School from Pre-K until grade 5, and currently attends Windham Middle School, where he is a member of the Junior Chamber Singers. His favorite subjects are Language Arts, where he especially loves to write science fiction stories and research papers; IT, where he enjoys making, launching, and breaking things; and Art because it is just plain fun. He started the school newspaper - the Windham Eagle Eye Monthly, and is active in Friends of Rachel, a club dedicated to spreading kindness in memory of Rachel J. Scott, who died in the Columbine school shooting. He is also working on learning basic programming.

Sam also enjoys swimming, soccer, and karate (he earned his black belt at age 9), and plans to start track in 8th grade.

In his free time, he likes playing on the Xbox and his friend's Airsoft team, and entertaining his cat Echo, whom he adores. This summer he plans to film a science fiction film with his friends, help Morah Mel with summer camp, and to top off the music loving, attend Acapella camp and return to learning to play drums.

Sam and his family would like to thank the most amazing Rabbi ever, Rabbi Braun. They would also like to thank Morah Mel, all the wonderful teachers at Levey - especially Morah Kerry - and in the Windham schools, Mrs. Lavine, Mrs. McBride, and Dr. Bob. He also wants to tell his friends how much he appreciates them, especially those who have stuck with him since Pre-K.

MAZEL TOV

מזל טוב

MAY ANNIVERSARIES

- 2 Douglas Chene & Jennifer Elowitch
- 7 Joel & Talia Timmins
- 8 Ben Marcus & Anita Bernhardt
- 12 Adam & Lisa Arens
- 12 Burt & Barbara Epstein
- 17 Randy & Pam Harding
- 25 Leticia Huttman & Rhetta Huttman
- 26 Eli & Katie Small
- 29 David & Nancy Brenerman
- 29 Jeff & Becca Howes
- 30 Matt & Lynn Goldfarb
- 30 Michael & Linda Jacobson
- 30 Jerry & Phyllis Rosen

JUNE ANNIVERSARIES

- 5 Myron & Ilene Berman
- 5 Harvey & Kathy Silverman
- 6 Ron & Gaye Blumenthal
- 9 Michael & Thea Greene
- 9 Mickey Haas, Jr. & Sheryl Haas
- 9 David & Elaine Lewis
- 9 Linwood & Judy Small
- 14 Brian & Connie Goldberg
- 14 Patrick & Jackie Maidman
- 15 Jon Gelchinsky & Tara Gingerich
- 15 Norm & Judy Wilson
- 16 Benjamin & Jeri Brem
- 16 Jon & Amy Brier
- 17 Lenny & Merle Nelson
- 17 Ernie & Toby Wallach
- 18 Harvey & Carole Cole
- 18 Hy & Peggy Osher
- 19 Mark & Norma Filler
- 19 Barry & Lori Saltz
- 22 Harold Millman & Miriam Remar Millman
- 23 Bernie & Marlene Cohen
- 23 Dan & Phyllis Dunitz
- 24 Joe & Debbie Bornstein
- 24 Jerry & Sue Gordon
- 24 Joseph & Rhoda Wildstein
- 25 Jim & Bonnie Klein
- 26 Jon & Jodi Freedman
- 26 Alan & Geri Hirsch
- 27 Stan & Judy Elowitch
- 27 Stephen & Lisa Schiffman
- 29 Jeff Bendremer & Danielle Wozniak
- 30 Stephen & Francine Blattner

ADULT JEWISH LEARNING

Judy Gatchell, Chair

JEWES OF SPAIN – WAS IT GOLDEN OR FOOLS GOLD? With Rabbi Larry Rubenstein

Wednesday evenings, April 30, May 7, May 14 | 7:00-8:00 pm

The TBE Adult Jewish Learning Committee is excited to have Rabbi Larry Rubenstein present this wonderful program for us this spring. The class will meet for three consecutive Wednesday evenings from 7-8:00 pm beginning April 30th. We will learn about the evolution of the Jewish community over fifteen centuries from Roman times to the expulsion from Spain in 1492. This will cover the “Golden Age” of Jewish settlement under the Muslims and deterioration under Christian rule, including disputations, inquisition, and eventual expulsion. RSVP to the TBE office at tel. 774-2649, email office@tbemaine.org or visit www.tbemaine.org. ■

TIKKUN OLAM COMMITTEE

Carolyn Turcio-Gilman, Chair

The Tikkun Olam committee has been very active, and the Temple community has responded generously. Following up on our successful Hanukkah Lights collection of toys and children’s clothes for Jewish Family Services (JFS), we collected more than \$80 in Machatzit Hashekel from Temple members participating in Purim activities, which we donated to the Preble Street Resource Center.

As of this writing, we are in the midst of a food and toiletry collection for JFS, planned to coincide with people clearing out their chametz in advance of Pesach. The participation has been wonderful, and we have delivered many boxes of much-appreciated necessities for members of the Portland community.

Looking forward, the Tikkun Olam committee plans to alternate collections for JFS and the Preble Street Resource Center. And we continue to collect professional clothing, shoes, and accessories for the ASPIRE program of the Maine DHHS and the Department of Labor, aimed at helping Maine residents currently requiring welfare assistance to find meaningful jobs. Food and toiletry items can be donated anytime to the new bins (decorated by KBE students) in the lower TBE foyer, and professional clothing can be brought in anytime and hung on the labeled coat rack in the coatroom.

We are also planning to organize our first TBE Tikkun Olam Day some time this summer. Stay tuned for additional details. If you are interested in joining the Tikkun Olam committee or helping with any activities, please inquire at the front office. The next Tikkun Olam committee meeting will be Sunday, May 18 at 10:30 am, and all are welcome to attend. ■

YAD L'YAD (CARING) COMMITTEE

Becky DeLois, Chair

Yad L'Yad has had a busy winter what with the loss of several temple members or loss of their loved ones. Cards always go out on these occasions and a shiva meal is offered. However, not very many families accept the meals which are now made in the temple kitchen. Evalin Stearn, a local caterer, often makes those meals and when she is not available, a Yad member or two come in to make it. Regardless of who cooks, the families are assured of a Kosher, tasty and thoughtfully made Shabbat dinner at a stressful and sad time in their lives. We also offer those very same meals to families of a newborn. While adjusting to the life of a new baby and losing plenty of sleep, the parents always accept an offer of a Shabbat meal!

In order for our temple members to get the help they deserve when lonely or ill, mourning the loss of a loved one, or welcoming a new baby, we need more people offering their hands. We are searching for all ages to participate in Yad L'Yad. It is such a rewarding mitzvah and requires very little of one’s time...just a kind heart and an hour now and then.

Do call the Temple at 774-2649 if a family member needs help, and call or email Becky DeLois, Yad L'Yad chair at 899-4068 or radelois@gmail.com to volunteer. We, the Yad L'Yad committee, welcome you all. ■

CONDOLENCES

Our sincere condolences to former member **Peter Koss** on the loss of his wife, Anita Diamond Koss, who passed away February 28 in Stamford, CT following a lengthy battle with ALS. In addition to her husband Peter, Anita will be sadly missed by her daughter, Allison; mother, Gabriella Diamond; sister, Miriam Diamond Kobliner and her husband Kenneth and their children, Benjamin, Sarah and Joshua; brother, Steve Diamond; mother-in-law, Shirley Koss; father-in-law, Herbert Koss; sister-in-law, Linda Koss Grossner and her children, Benjamin and Mathew.

Our sincere condolences to **Jane Mack and her husband Marshall** on the passing of Jane's father, Stanley H. Reuben on Friday, March 28, 2014. Stanley and his wife Babette Reuben were married for 60 years, and lived in Daytona Beach, Florida. Stanley's grandsons are Michael and Larry Mack.

Our condolences to **Larry Brown and Sandi Goodman Brown** on the passing of Larry's father, Louis (Tuts) Brown, on Wednesday, April 2 in Florida. Louis is survived by his beloved wife, Fay Lerman Brown, to whom he was married for 54 years. Louis is also survived by his grandchildren; Larry and Sandi's children, Jessica and Max Brown; brother and sister-in-law Alan and Karen Lerman and many other beloved family members and friends.

TODAH RABAH - Thank you!

Todah Rabah to those who participated in Shabbat services:

Debbie Kanter, Tom & Marjorie Berman, Morton Gold, Sandra Kornblum, Paul Muscat, Gil & Barbara Dichter, Kasper Wilder, Norm & Judy Wilson, Emily Freedman, Sam Nemeroff, Carol Nemeroff, Stephanie Cummings, Eden Johnson, Riley Johnson, Isabelle Cohen-Johnson, Ellie Miller, Connor Foye, Judy Gatchell, Naomi Freidenreich and her cousin Aliza, Rabbi David Freidenreich and Phil Freidenreich.

Todah Rabah to **Barbara & Michael Peisner** for sponsoring the Kiddush on Friday February 28 in memory of Michael's father, Balfour Peisner, and Barbara's brother, Jack Kanter.

Todah Rabah to the many volunteers that made the Oy Vey Cafe' a great success: **David Jacobs** for directing, emceeding and performing; **Tom Berman and Isaac Shainblum** for managing the sound system; **Irwin Gratz & Bonnie Rodden, Marjorie Berman, Jodi Veysey, & Rorie Lee** for

their help the night of the event; and for their generous gift of time & talent, the performers...**Rabbi Braun, Andrea Carr, Bernie Cohen, Ross Goldberg, Lynnea Harding, Mike Levinsky, Jamie Lupien Swenson, and Jodi & Terry Veysey.**

Todah Rabah to **Adele & Dick Aronson and Elaine & David Lewis** for sponsoring the Kiddush on Friday night March 7th in memory of their parents, Betty & Joe Silverman.

Todah Rabah to **Joan Levy, Isabelle Cohen Johnson and Joan Barkin** for helping out in the kitchen in preparation for the Freidenreich *brit milah* ceremony.

Todah Rabah to **Debbie Kanter** for proof reading the March/April issue of the Shofar.

Todah Rabah to those that made Purim so enjoyable: **Joy Krinsky** for organizing the Moustache Madness Purim Festivities; **Bob Bradbury** for setup; **Tom Berman** for running the A/V equipment; Todah to the following Megillah Readers: **Joy Krinsky, Paul Greene, David Freidenreich, Rob Aranson, Beth Strassler, Michael Peisner, and Barbara Dichter.**

Todah Rabah to: our *hamenstaschen* bakers – **Barbara and Gil Dichter** who made over 400 hamentaschen for TBE's Purim Festivities; and for the Crown Royal: **Elaine Kahn & Larry Troster, and Harriet & Phil Freidenreich.**

Todah Rabah to our Kadima Beth El students and TBE members who participated in the Tikkun Olam Committee's "Machatzit Hashekel" Purim mitzvah project by collecting coins to raise funds (we raised \$100) for Preble St. and Jewish Family Services. A special thanks to **Carolyn Turcio-Gilman, Barbara Peisner, Sharon Bresler, Drew Stevens, Tara Gingerich & the Tikkun Olam Committee.**

Todah Rabah to **Olivia Solodar and Daniela Skalina** for organizing the Shalach Manot gift basket program. And Todah Rabah to the Shalach Manot volunteers who helped box and deliver: **Tara Gingerich, Elliott Wincele, Ariana Solodar-Wincele, Nora Ciffer, Tom & Margie Berman, Connie Goldberg, Isabelle Cohen Johnson, Janine Smestad, Debbie Bornstein, Elaine Kerachsky, Hedy Cohen, Carol Gilbert, Becky DeLois, Ellie Miller, Diana Staples, Tracy Hall, Irrae Wood, Randy Harding, Armand Lucier, Ed Schultz, Tony Paratore, Sherry Quint, David Lewis, Patricia Finkelstein, Clara Purinton, Joy Krinsky, Lisa Shiffman, Michael & Barbara Peisner, Sharon Craig, and Norm & Judy Wilson.**

Todah Rabah to the following for organizing our Member Appreciation Brunch: **Karen Lerman, Jodi Veysey, and Isabelle Cohen-Johnson.**

Todah Rabah to **Terry Veysey** for helping assemble the new tables and computer desk for the Library & Youth Lounge.

Todah Rabah to Chef Tommy Darhower and the following volunteers who helped make the gnocchi, prepare, serve and clean up Friday's community dinner: **Isabelle Cohen Johnson, Joan Levy, Jodi Veysey, Elaine Kerachsky, Fae Silverman, Elliott Wincele, Noah & Talia Timmins, Nadine Weinberg and KBE Director Mel Weiss.**

Todah Rabah to the **Tikkun Olam committee and TBE members** that donated to Sunday's food drive to benefit the Jewish Family Services Food Pantry.

Todah Rabah to **Drew Stevens** for obtaining, sanding & priming the new boxes for the Tikkun Olam food and clothing drive donations.

Todah Rabah to **Larry and Wendy Kane** for the donation of comfortable chair for the Youth Lounge in honor of the granddaughter Sarah's Bat Mitzvah.

MAZEL TOV

Mazel Tov to **Harriet and Ed Schultz** on the engagement of their daughter Johanna to Justin Herman in Oakland, CA.

Mazel Tov to **Rabbi Rachel Isaacs** of Beth Israel Congregation, Waterville and Colby College -- and wife of our **Kadima Beth El Director Mel Weiss** -- on being recognized by the Forward magazine as one of America's 28 Most Inspiring Rabbis of 2014! *Yishar Koach* - may you go from strength to strength!

Mazel Tov to **Bette and Sam Novick** on their newest grandson, Benjamin Jonah Novick. Dena, David, Henry, and Jack are beyond excited to announce the arrival of their third son/baby brother, who was born on Saturday, March 8.

Mazel Tov to **Emily and Stanley Chaleff** on the birth of their son Asher on Tuesday, April 1st, in Portland. Asher is welcomed by big brother Gideon, grandparents Yisraela Chaleff and Carole and Barry Rosenberg, his aunts, uncles and cousins, and the TBE community.

Mazel Tov to **David & Paul Jacobs** on the expansion of their family as they welcome their new foster daughter, Amanda.

DONATIONS & TRIBUTES

FEBRUARY - MID APRIL 2014

EDWARD WEISBERG FUND

Carl and Recia Richman
In memory of Louis "Tuts" Brown
Carl and Recia Richman
In memory of Dianne Schwey Richman
Rita Weisberg
In memory of Dianne Schwey Richman
Helen Isenman and Susan Isenman
In memory of Louis "Tuts" Brown
Rita Weisberg
In memory of Louis "Tuts" Brown
Rita Weisberg
In memory of Sarah Schwey
Eddie Richman
In memory of Louis "Tuts" Brown

ENDOWMENT FUND

Stu and Carol Gilbert
In memory of Inez Gray
Stu and Carol Gilbert *In memory of*
Pearl Estelle (Cohen) Gerber

ESTATE CONTRIBUTIONS

The Estate of Catherine Cohen

GENERAL FUND

David Band
In memory of Benjamin Band
Maurice and Phyllis Cohen
In memory of Harry Cohen
Abe and Tama Fineberg
In memory of Pearl Gerber
David Freidenreich and Sara Kahn-
Troster *Todah Rabah to those who*
prepared the food for the bris
Helen Gretskey
In honor of Stuart Gilbert's 70th birthday
Debbie Kanter *In honor of the birth of*
Jacob Meir Freidenreich
Steve and Cindy Lerman
In memory of Ruth Sprince
Jean Martens
Shirley Rosen
In memory of Irma Grable's mother
Shirley Rosen *In honor of the birth of*
Joe & Becky Delois grandson, Asher
Shirley Rosen
In memory of Pearl Gerber
Shirley Rosen *In honor of the birth of*
Jacob Meir Freidenreich
Kathy Stairs
Abe and Tama Fineberg *In honor of*
the birth of Susan Gilbert Hirshon's
grandchild

Shirley Rosen *In honor of the birth of*
Benjamin Jonah Novick
Shirley Rosen
In honor of Rubin Laskoff's 90th birthday
Barbara and Robert Goldfarb
In memory of George Wolf
David and Elaine Lewis
In memory of Minnie Weisberg Lewis
David and Elaine Lewis
In memory of Blanche Weisberg
David and Elaine Lewis
In memory of Isaac Weisberg
Gil and Marilyn Prawer
In memory of Harry Siegel
Anita Weiner
In memory of Oscar P. Gottschalk
Abe and Tama Fineberg
In memory of Louis "Tuts" Brown
Abe and Tama Fineberg
In memory of Stanley Reuben
Matthew and Jessica Jacobson
In memory of Louis "Tuts" Brown
Stan and Doris Pollack
In memory of Louis "Tuts" Brown
Shirley Rosen
In memory of Louis "Tuts" Brown
Abe and Tama Fineberg
Speedy recovery Sandi Goodman-Brown
Shirley Rosen
Speedy recovery Ernie Sturman
Shirley Rosen
Speedy recovery Abe Benjamin

GIFT SHOP DONATIONS

Alan and Karen Lerman *Happy Passover*
with love to Charlie & Eddy Dibner
Alan and Karen Lerman *In honor of*
the birth of Benjamin Jonah Novick
Brandon and Aim'ee Lerman *In honor*
of the birth of Benjamin Jonah Novick
Justin and Samantha Lerman *In honor*
of the birth of Benjamin Jonah Novick
Alan and Karen Lerman
In memory of Louis "Tuts" Brown
Brandon and Aim'ee Lerman
In memory of our beloved "Uncle Tuts"
Brown
Justin and Samantha Lerman
In memory of our beloved "Uncle Tuts"
Brown
Alan and Karen Lerman
In memory of Stanley Reuben

KADIMA BETH EL RELIGIOUS SCHOOL

Debbie Kanter
In memory of Shirley Bogg

LIBRARY FUND

Ernie and Toby Wallach *In honor of*
the birth of Jacob Meir Freidenreich
Ernie and Toby Wallach *In memory*
of their parents Lea & Herman Wallach
and Stella & David Schreiber

KOOCHER/ROBINOV FUND

Ethel Koocher
In memory of Jill Wainer's mother
Ethel Koocher
In memory of Jack McDermott
Ethel Koocher
In memory of Marty Gould
Ethel Koocher *In memory of Inez Gray*
Ethel Koocher *In memory of Josh Ross*
Ethel Koocher
Speedy recovery Josh Neudel
Jackie Robinov
In memory of Isaac Wald
Jackie Robinov
In memory of Alec Bookbinder
Scott and Alise Koocher
In memory of David Koocher
Scott and Alise Koocher
In memory of Nathan Koocher
Bill and Betsy Webber
Speedy recovery Stanley Schatz

TBE MEMORIAL PARK

Rubin and Sally Laskoff
In memory of Rachael Laskoff
Nancy Finberg
In memory of Pearl Gerber

MUSIC FUND

Leah Cohen
In memory of M. William Cohen
Leah Cohen
In memory of Alexander Kaatz
Morton and Esther Gold
In memory of Mrs. Bessey Gold

RABBI'S DISCRETIONARY FUND

Ben and Judy Bertram
In memory of Inez Gray
Michael Boguslaw *In thanks*
Yaron Dan
Kathy Stairs

DONATIONS & TRIBUTES

Michael and Jill Thaler
In memory of Pearl Gerber
 Jerry and Phyllis Rosen
In memory of Louis "Tuts" Brown

SISTERHOOD

Rick Isaacson *In memory of Anita Koss*

TECHNOLOGY FUND

Burt and Barbara Epstein
 Matt and Lynn Goldfarb

YAD L'YAD

Stephen and Lisa Schiffman
*In honor of the birth of Joe & Becky
 DeLois' grandson*
 Dan and Phyllis Dunitz
In memory of Anna Shuman

Yahrzeit Fund

Linda Abromson
In memory of Frances Elowitch
 Dick and Adele Aronson
In memory of Dora Aronson
 Alan and Gail Atkins
In memory of Ida Atkins
 Myron and Ilene Berman
In memory of Samuel Berman
 Mark and Ellen Bramson
In memory of Udell Bramson
 Peter and Gerri Bridgman
In memory of Muriel Shapiro
 Bill and Vera Clenott
In memory of Hattie Clenott
 Burt and Barbara Epstein
In memory of Doris K. Epstein
 Esther Goldberg
In memory of Myer Goldberg
 Honey Goldman
In memory of Leon Hecht
 Marcelle Gorrivan
In memory of Isaac Bohbot
 Howard and Rose Gunty
In memory of Mitchell Gunty
 Helen Isenman and Susan Isenman
In memory of Benjamin Levin
 Leonard and Anne Kovit
In memory of Max Kovit
 Rubin and Sally Laskoff
In memory of Sylvia Rothblatt
 Rubin and Sally Laskoff
In memory of Steven Laskoff
 David and Elaine Lewis
In memory of Joseph Silverman

Fred and Ruth Miller
In memory of Nathan Tapper
 Fred and Ruth Miller
In memory of Alice Teitelbaum
 Ivan and Sue Most
In memory of Sylvia Sheinwald
 Paula Osher
In memory of Samuel Osher
 Suzi Osher
In memory of Dr. Alfred Osher
 Diane Perlin *In memory of Harry Mack*
 Ellie Rolnick *In memory of Reva Rolnick*
 Bruce Ruben *In memory of Max Ruben*
 Bruce Ruben
In memory of Mary Kaplan
 Isaac Shainblum
In memory of Sybil Goldberg
 David and Janis Cohen
In memory of Edith Cohen
 Thelma Cope
In memory of Mitchell Cope
 Charlotte Farber
In memory of Abraham Zimmerman
 Charlotte Farber
In memory of Alfred Max Zimmerman
 Lenny and Merle Nelson
In memory of Mildred A. Nelson
 Eddie Richman
In memory of Dianne Schwey Richman
 Steve Gleit and Dana Robbins
In memory of Selma Gleit
 Ellen Tabachnick *In loving memory
 of my mother, Betty G. Tabachnick*
 Jon and Susan Young
In memory of Charles Young



SUPPORTING TEMPLE BETH EL

Contributing to the following TBE funds is a wonderful way to honor a loved one, commemorate a yahrzeit or celebrate a special event. To make a donation, please complete the form below and send it along with your payment to Temple Beth El. Every gift makes a difference - we appreciate your support!

- Adult Education Fund
- Annual Appeal
- Brotherhood Fund
- Building Fund
- David & Ethel Wilson Family Fund
- Education Director's Discretionary Fund
- Edward Weisberg Fund
- Endowment Fund
- General Fund
- Kadima Beth El (Hebrew School)
- Phyllis & Jonas B. Klein Fund
- Kiddush Fund
- Kol Yeladim Early Childhood Fund
- Koocher/Robinov Hebrew School Scholarship Fund
- Library Fund
- Temple Beth El Memorial Park Fund
- Molly Finkelman Choir / Music Fund
- Norman Finberg USY Fund
- Prayer Book Fund
- Rabbi's Discretionary Fund
- Sisterhood
- Technology Fund
- Yad L'Yad (Caring Committee) Fund
- Yahrzeit Fund

First & Last Name: _____

Telephone: _____

Email: _____

Address (street, city, zip): _____

(circle one) In honor of / In memory of: _____

Send acknowledgement to (name & address): _____

Check enclosed Credit card: Visa / MC

Credit card #: _____



MAY

FRIDAY, MAY 2

5:30 pm Kabbalat Shabbat Services
7:28 pm Shabbat candle lighting time

SATURDAY, MAY 3

9:30 am Shabbat Services
8:28 pm Havdalah time

SUNDAY, MAY 4 *Yom Hazikaron - Israel Memorial Day*

9:00 am Kadima Beth El
9:00 am Morning Minyan & Schmooze and Shmear
9:00 am Yom Ha'atzmaut Shuk & Celebration

TUESDAY, MAY 6 *Yom Ha'atzmaut - Israel Independence Day*

2:00 pm Interfaith Committee Meeting

WEDNESDAY, MAY 7

3:30 pm Kadima Beth El
6:00 pm 7th Grade
7:00 pm Jews of Spain with Rabbi Larry Rubenstein

FRIDAY, MAY 9

5:30 pm Shabbat Services
7:36 pm Shabbat candle lighting time

SATURDAY, MAY 10

9:30 am Shabbat Services
8:36 pm Havdalah time

SUNDAY, MAY 11

9:00 am Kadima Beth El
9:00 am Morning Minyan & Schmooze and Shmear

TUESDAY, MAY 13

5:30 pm TBE Executive Committee Meeting

WEDNESDAY, MAY 14

3:30 pm Kadima Beth El
6:00 pm 7th Grade
7:00 pm Jews of Spain with Rabbi Larry Rubenstein

FRIDAY, MAY 16

5:30 pm Kabbalat Shabbat Services, Emily Freedman's Bat Mitzvah
7:44 pm Shabbat candle lighting time

SATURDAY, MAY 17

9:30 am Shabbat Services, Emily Freedman's Bat Mitzvah
8:00 pm Lag B'Omer Teen Event with Bet Ha'am
8:44 pm Havdalah time

SUNDAY, MAY 18 - *Lag B'Omer*

9:00 am Kadima Beth El
9:00 am Morning Minyan & Schmooze and Shmear

TUESDAY, MAY 20

5:30 pm TBE Board Meeting

FRIDAY, MAY 23

5:30 pm Kabbalat Shabbat Services, Jonathan Maidman's Bar Mitzvah
7:51 pm Shabbat candle lighting time

SATURDAY, MAY 24

9:30 am Shabbat Services, Jonathan Maidman's Bar Mitzvah
8:51 pm Havdalah time

SUNDAY, MAY 25

9:00 am Morning Minyan
9:30 am Brotherhood Breakfast with Speaker

MONDAY, MAY 26 - Memorial Day

TBE OFFICE CLOSED
8:30 am Morning Minyan

WEDNESDAY, MAY 28 - *Yom Yerushalayim*

3:30 pm Kadima Beth El
6:30 pm Israeli Scouts Tzofim Concert

FRIDAY, MAY 30

5:00 pm Volunteer Award Shabbat & TBE Annual Meeting
5:30 pm Kabbalat Shabbat Services
7:58 pm Shabbat candle lighting time

SATURDAY, MAY 31

9:30 am Shabbat Services
8:58 pm Havdalah time

JUNE

TUESDAY, JUNE 3 - *Erev Shavuot*

6:50 am Morning Minyan
8:01 pm Candle lighting time

WEDNESDAY, JUNE 4 - *Shavuot (Day 1)*

TBE OFFICE CLOSED
9:30 am Morning Minyan

THURSDAY, JUNE 5 - *Shavuot (Day 2)*

TBE OFFICE CLOSED
9:30 am Morning Minyan

FRIDAY, JUNE 6

5:30 pm Kabbalat Shabbat Services
8:03 pm Shabbat candle lighting time

SATURDAY, JUNE 7

9:30 am Shabbat Services
9:03 pm Havdalah time

SUNDAY, JUNE 8

9:00 am Morning Minyan
6:00 pm A Night of Jewish Baseball: A Tribute to William Troubh

TUESDAY, JUNE 10

5:30 pm TBE Executive Committee Meeting

FRIDAY, JUNE 13

5:30 pm Kabbalat Shabbat Services, Sam Nemeroff's Bar Mitzvah
8:07 pm Shabbat candle lighting time

SATURDAY, JUNE 14

9:30 am Shabbat Services, Sam Nemeroff's Bar Mitzvah
9:07 pm Havdalah time

FRIDAY, JUNE 20

5:30 pm Shabbat Services
5:30 pm Kadima Beth El Shabbat HaLaila with PJ Library
8:09 pm Shabbat candle lighting time

SATURDAY, JUNE 21

9:30 am Shabbat Services
9:09 pm Havdalah time

FRIDAY, JUNE 27

5:30 pm Shabbat Services
8:10 pm Shabbat candle lighting time

SATURDAY, JUNE 28

9:30 am Shabbat Services
9:10 pm Havdalah time

SERVICES

Weekdays, M - F	6:50 am
Friday night Kabbalat Shabbat	5:30 pm
Saturday (Shabbat) and Holidays	9:30 am
Secular Holidays	8:30 am

KADIMA BETH EL RELIGIOUS SCHOOL PROGRAM

Sundays, dates as noted	9:00 am - 12:00 pm
Wednesdays	3:30 pm - 5:30 pm

PORTLAND CHEVRA KADISHA



*In time of need,
one Jew caring
for another*

JEWISH FUNERAL HOME

PreArrangement Counseling

471 Deering Avenue
Portland, ME 04103

207•774•3733

portlandjewishfuneralhome.org

HAND ROLLED

BAKED DAILY



Bagels, Lox, Dairy & Vegan Spreads

147 CUMBERLAND AVE.

UNIONBAGEL.COM

207.747.4400

Call us for catering.

Now Proudly Serving Temple Beth El

SHOFAR CONTENT SUBMISSION DEADLINE

for the July/August 2014 issue is Friday, June 6.

Please submit material via e-mail as text in the body of the message or as an attached Microsoft Word document to office@tbemaine.org. Temple Beth El reserves the right to edit all material.

MEMBERSHIP BUSINESS DIRECTORY

Please support our members

Need a car, a therapist, or perhaps an attorney or realtor? TBE members are a great business resource.

Promote your business in our Member Business Directory for just \$36 for the year.

Contact TBE at 774-2649 for more information.



Clear Water
PSYCHOTHERAPY

Barbara Peisner, LCSW
Licensed Clinical Social Worker

96 India Street
Portland, ME 04101
207.772.2202

www.clearwaterpsychotherapy.com

Individuals, Couples

depression, anxiety, perinatal
mental health, bereavement,
hypnotherapy



Route One, Saco
www.patriotsubaru.com 1-866-284-7900

Office Hours By Appointment

CLINICAL COUNSELING
ASSOCIATES OF MAINE. P.A.

H. MICHAEL ALPREN, J.D., L.C.P.C., L.M.F.T.

1863 Washington Avenue
Portland, Maine 04103-1625

Telephones: (207) 797-7900
(207) 576-8580





TEMPLE BETH EL

400 Deering Avenue
Portland, ME 04103

(207) 774-2649
www.tbemaine.org



Save the date!

THE TZOFIM ISRAELI SCOUTS

Live in Concert

**Wednesday, May 28th
6:30 pm**

**Temple Beth El
400 Deering Avenue, Portland**

**FREE
ALL ARE WELCOME!**

**Temple Beth El proudly
presents The Tzofim Friendship
Caravan - a multi-talented
troupe of ten teenage Israeli
Scouts, performing a fun,
family-friendly celebration of
Israeli culture through song and
dance, in English and Hebrew!
Exclusive Portland concert on
their US tour!**